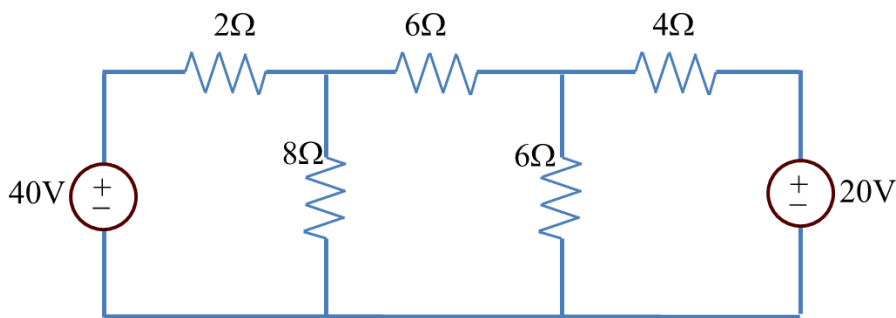


The Mesh-Current Circuit Analysis Method

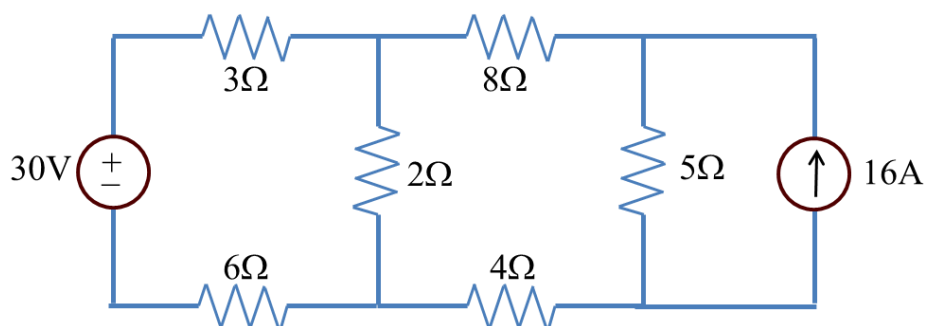
- Step 1 – Identify all meshes (loops that do not enclose any other loops) and label a mesh current for each loop.
- Step 2 – Identify voltages across all resistors in each mesh and write in terms of mesh currents.
- Step 3 – Use KVL to write an equation for each mesh.
- Step 4 – Solve for unknowns
- Step 5 – Write actual currents through various elements in terms of mesh currents.

In **superposition**, we can solve a circuit using each source independently and then sum the results.

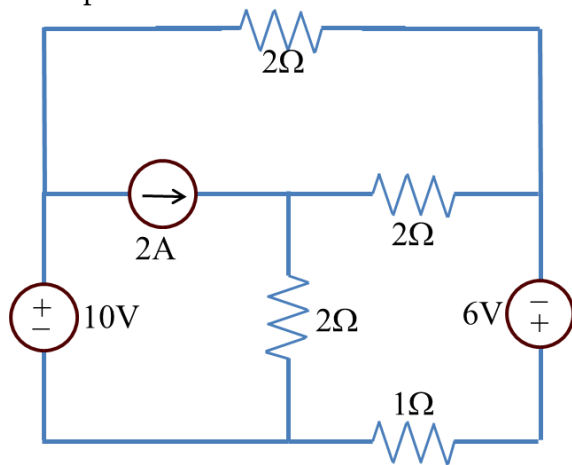
Example 1



Example 2



Example 3



Superposition Example

